



## Knighton Farm Hawthorne Road

, North Kilworth, LE17 6EU

£699,000

Nestled in the charming village of North Kilworth, this exquisite four-bedroom detached family home on Hawthorne Road is a true gem waiting to be discovered. As you step into the property, you are greeted by an inviting entrance hall that sets the tone for the elegance that awaits within. The sitting room boasts a cosy wood-burning stove, perfect for those chilly evenings, while the dining room features French doors that open up to the picturesque garden, seamlessly blending indoor and outdoor living. The breakfast kitchen is ideal for whipping up delicious meals, and a convenient utility room adds to the functionality of this beautiful home. Upstairs, you will find four generously sized double bedrooms, offering ample space for the whole family. A snug nestled between bedrooms three and four provides a cosy retreat, perfect for relaxation or as a play area for the little ones. The family bathroom is complete with a separate shower, adding a touch of luxury to everyday living. Outside, a delightful surprise awaits in the form of a one-bedroom annexe with a separate office space, offering versatility for various needs. The courtyard and walled mature garden provide a tranquil escape from the hustle and bustle of everyday life, perfect for enjoying a morning coffee or hosting gatherings with loved ones.

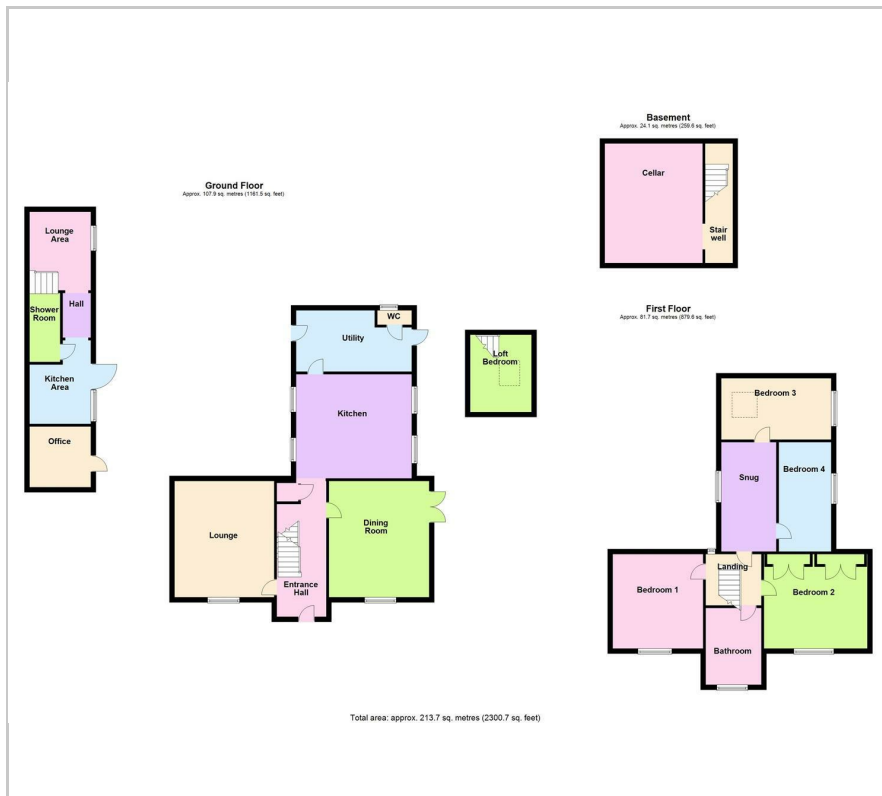
Don't miss the opportunity to make this period property your own and experience the quintessential British village lifestyle in this charming abode.

### Viewing

Please contact our Market Harborough Sales Office on 01858 461888 or our Lutterworth office on 01455 888670 if you wish to arrange a viewing appointment for this property or require further information.



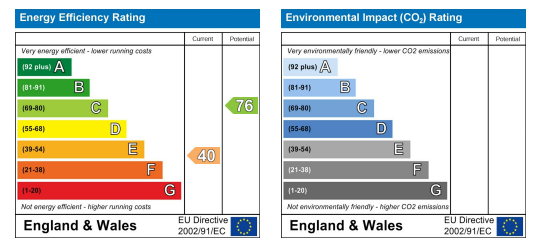
# Floor Plan



# Area Map



# Energy Efficiency Graph



These particulars, whilst believed to be accurate are set out as a general outline only for guidance and do not constitute any part of an offer or contract. Intending purchasers should not rely on them as statements of representation of fact, but must satisfy themselves by inspection or otherwise as to their accuracy. No person in this firm's employment has the authority to make or give any representation or warranty in respect of the property.